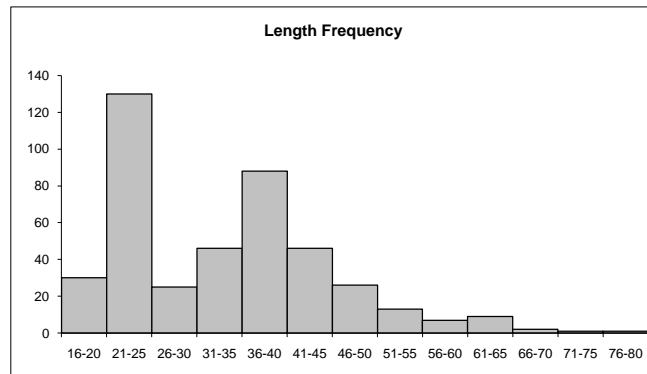
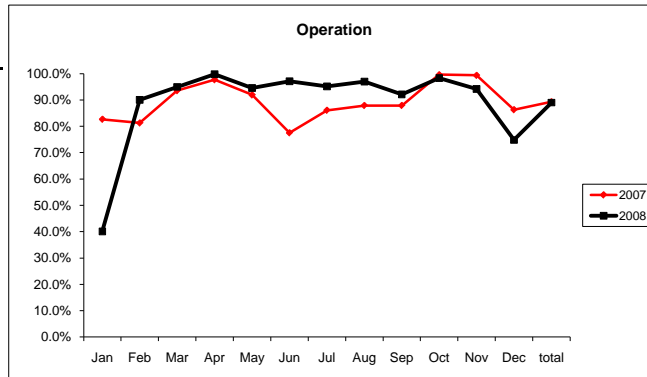


2007-2008 Operation Status By Month (North & South combined)													
	Jan	Feb	Mar	Apr	May	Jun	Jul	Aug	Sep	Oct	Nov	Dec	total
2007	82.7%	81.3%	93.5%	97.7%	91.9%	77.5%	86.1%	87.9%	87.9%	99.6%	99.4%	86.3%	89.3%
2008	40.1%	90.1%	95.0%	99.8%	94.6%	97.1%	95.2%	97.0%	92.1%	98.3%	94.2%	74.8%	89.0%

2008 Steelhead Length Frequency Data(net passage)

length cm	total
16-20	30
21-25	130
26-30	25
31-35	46
36-40	88
41-45	46
46-50	26
51-55	13
56-60	7
61-65	9
66-70	2
71-75	1
76-80	1
total	424
n=	424
Max	76
Min	18
Mean	33.56
st.dev	11.67



2008 Monthly Count Summary											
Month	Chinook Salmon				total	other					Total
	Non-Clip	Clipped	Unknw clip			STL	SASU	SAPM	HH	Unident	
Jan	16	7	5		28	9	0	1	0	32	98
Feb	6	4	1		11	56	80	6	0	212	376
Mar	0	2	0	2	2	60	153	31	0	103	351
Apr	2	0	0	2	2	23	137	101	10	46	321
May	97	6	1	104	104	17	64	88	13	17	407
Jun	190	2	0	192	192	106	16	18	1	20	545
Jul	177	1	1	179	179	32	8	5	0	28	431
Aug	266	1	5	272	272	5	2	4	1	0	556
Sep	649	37	8	694	694	8	-1	2	0	11	1408
Oct	408	27	4	439	439	33	0	0	0	17	928
Nov	167	16	1	184	184	50	0	1	0	7	426
Dec	79	73	9	161	161	25	0	0	0	2	349
Total	2057	176	35	2268	2268	424	459	257	25	495	6196

—