



The Lower Yuba River Accord

Schedule and Work Plan

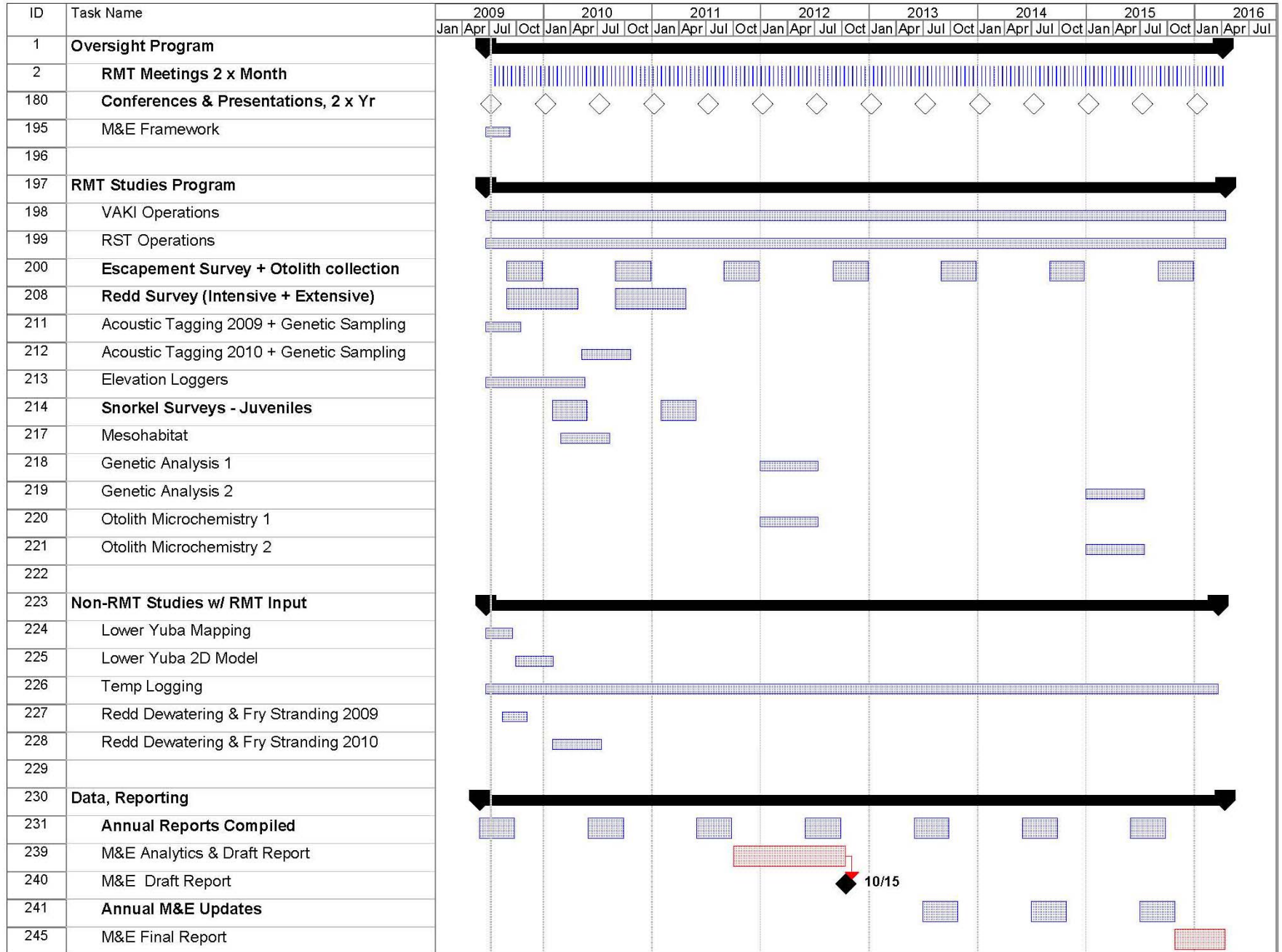
**Presentation at
RMT Symposium
July, 2009**

www.yubaaccordrmt.com

Current Tasks and Work in Progress

- Studies – Summer 09
 - VAKI Riverwatcher
 - RST's
 - Acoustic tracking
 - Genetic Sampling
- Studies – Fall 09, add:
 - Escapement survey & otolith collection
 - Extensive & intensive redd survey
- Other Tasks
 - VAKI system upgrades
 - Map compilation
 - Server system completion
 - Annual reports (5)
 - Updates to field study protocols
 - Revisions/finalize M&E plan

Draft Long Term Work Plan



10/15

RMT Infrastructure & Programs Summary – July 2009

Programs

- RMT meetings: typically bi-monthly
- M&E Framework Document – review draft out now, Final this fall
- Study Plans, developed or in development:
 - VAKI, RST's, Escapement, Redd surveys, Acoustic tagging underway
 - Otoliths, genetics, snorkel survey, mesohabitat in development
- Grants: RMT subcommittee pursuing additional funding
- Outreach: Conferences (AFS in spring), dedicated seminars (RMT symposium July 7, 2009), web site
- Oversight & participation in other Lower Yuba issues:
 - RMT consultations on flow changes & flow schedules
 - RMT review & comment on other YCWA studies
 - RMT participation in collaborative studies (Lower Yuba sonar/LIDAR mapping with PG&E & YCWA)

RMT Infrastructure & Programs Summary – July 2009

Infrastructure

- Web sites: Internal (RMT only), and external
- Office (approx 1000 sf), Shop 40 x 60 + yard, near Yuba/Daguerre
- Server-supported computer system, VPN + 4 workstations
- 5 trucks, 3 boats, extensive small gear
- Dedicated budget (in reserved account)
- PSMFC supported staffing & minor purchases
- Reasonably streamlined admin, reporting, accounting & contracting system

Personnel

- Regular RMT Participation: YCWA, CDFG, NMFS, USFWS, SYRCL (for NGO's), PG&E
- Staffing:
 - Project Manager (recruiting)
 - Biologists
 - Crew Lead, full time field staff
 - Seasonal Field Staff
 - Total 9.5 FTE's

Budget Planning

- Budget larger in early years (more studies), lower in out years
- FY 2009-10 Budget just over \$1M
 - Approximately 75% staffing & consultant support
 - Approximately 25% overhead, infrastructure, materials, supplies, projects
- Investigating grants, cooperative opportunities, resource sharing

Additional Information on the Lower Yuba Accord

Go to www.yubaaccordrmt.com for more information



The Lower Yuba River Accord

Schedule and Work Plan

**Presentation at
RMT Symposium
July, 2009**

www.yubaaccordrmt.com